

Seasonal Patio Standards

March 2019

1. Permits for Seasonal Patios

Any person or persons intending to occupy a portion of the municipal right-of-way, including a portion of the sidewalk, boulevard, or on-street parking for a Seasonal Patio must first apply for and receive a Road Occupancy Permit from the Township of Scugog.

All patios must comply the general conditions and operating requirements outlined in the Road Occupancy By-law and the standards provided in the following sections.

2. Site Plans

All Site Plans for Seasonal Patio must include a scaled drawing with:

- 2.1 Location and dimension of the building, entrances, exits, and washrooms,;
- 2.2 Location and use of the adjacent buildings and their entrances/exits;
- 2.3 The location and dimensions of the patio and its entrances/exits;
- 2.4 Area of patio (m²);
- 2.5 Width of existing sidewalk (m);
- 2.6 Length of sidewalk (m);
- 2.7 Number of parking spaces occupied (maximum 2). Occupied and adjacent spaces must be identified on the site plan;
- 2.8 The location and dimensions of any umbrellas, furniture, and attendant stands;
- 2.9 The location, height, and material type of boundary fence(s) and location and dimensions of any gates or openings;
- 2.10 Location of fire extinguishers;
- 2.11 Proposed patio design, location, dimensions, material type, and grades;
- 2.12 Elevations of all existing entrances and along the frontage of the building, curb, and proposed patio at curb and outermost edge (street side);

Seasonal Patio Standards

March 2019

- 2.13 Location of all Municipal services or assets within 6 metres of the proposed patio (e.g. hydrants, utility poles, trees, planters, streetlights, benches, catch basins, manholes, garbage receptacles, signs, awnings, etc.);
- 2.14 Location of all curb cuts and driveways close to the patio;
- 2.15 The number of seats on the patio; and
- 2.16 The maximum occupant load of the principle business and patio according to the Ontario Building Code.

3. Design Requirements

3.1 General

- 3.1.1 All patios must maintain and comply with the requirements of the Accessibility for Ontarians with Disabilities Act. It is the responsibility of the business owner to ensure their own compliance with the Act.
- 3.1.2 All entrances to the patio must be maintained in a manner that ensures the accessibility of patrons of all levels and abilities.
- 3.1.3 Sidewalk patio extensions must include a traction aid to reduce slipping hazards and must also include a transition plate between the sidewalk extension and existing concrete sidewalk surface.
- 3.1.4 Exterior barriers facing on-street parking or the roadway must be affixed with high-visibility reflective markers.
- 3.1.5 The gutter portion of the curb must be maintained open from leaves and debris to allow free passage of storm water to catch basins.

3.2 Patio Dimensions

- 3.2.1 A minimum passable sidewalk of 1.8 metres must be maintained at all times
- 3.2.2 Patios shall not extend greater than 2.2 metres from the outermost upper edge of the curb to the outermost edge of the patio where existing parking spaces are located.
- 3.2.3 No portions of the patio construction are permitted to overhang the roadway or reduce the width of the sidewalk to less than 1.8m.

Seasonal Patio Standards

March 2019

- 3.2.4 Barriers surrounding patio area shall be 36" tall.
- 3.2.5 The walking surface of the sidewalk patio shall be constructed by 2x6" boards as a minimum.

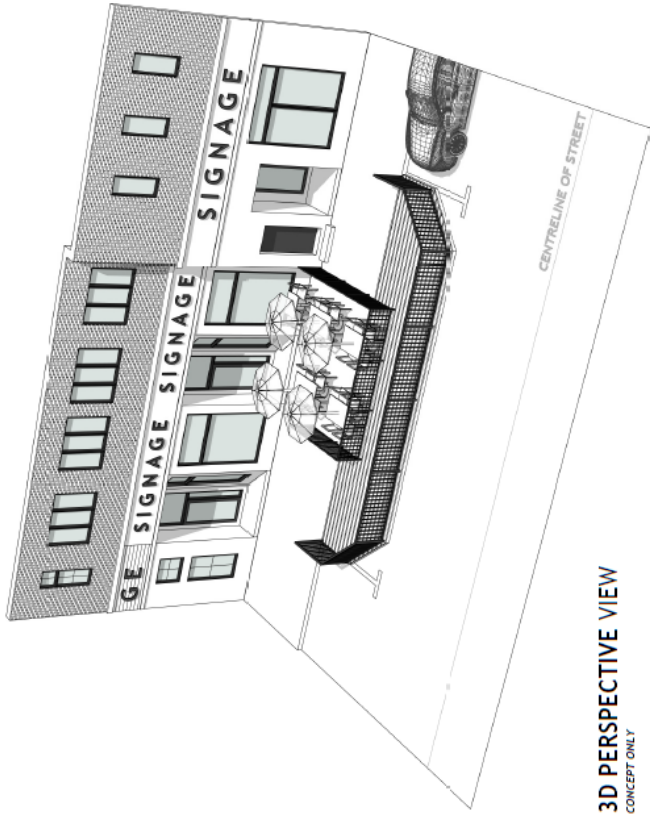
3.3 Patio Design / Furnishings

- 3.3.1 Construction material types must be in uniform keeping. This includes structures facing the street and surrounding the seating elements and must comply with the design layout and drawings on file with the Township.
- 3.3.2 Sienna Brown pressure treated wood only will be allowed for the sidewalk patio base.
- 3.3.3 Barriers surrounding patio area shall be constructed black aluminum or similar appearance interlocking railings.
- 3.3.4 Umbrellas shall be a solid heritage compatible colour and contain no advertising.
- 3.3.5 Patio furniture must be approved through the Township's Heritage Permit process.
- 3.3.6 No signs or advertising are permitted within the patio area other than one menu board.
- 3.3.7 Directional signs will be permitted at each end to guide pedestrians onto the sidewalk patio extension platform.
- 3.3.8 Planters must be contained within the patio area, or as agreed by the Township.

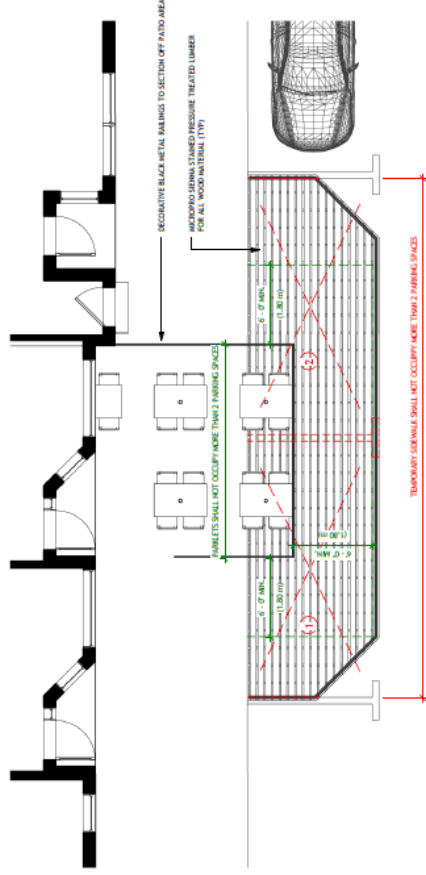
4. Sample Layouts

Sample layouts for Seasonal Patios are attached in Appendix A.

Appendix A
Sample Seasonal Patio Layouts



3D PERSPECTIVE VIEW
CONCEPT ONLY



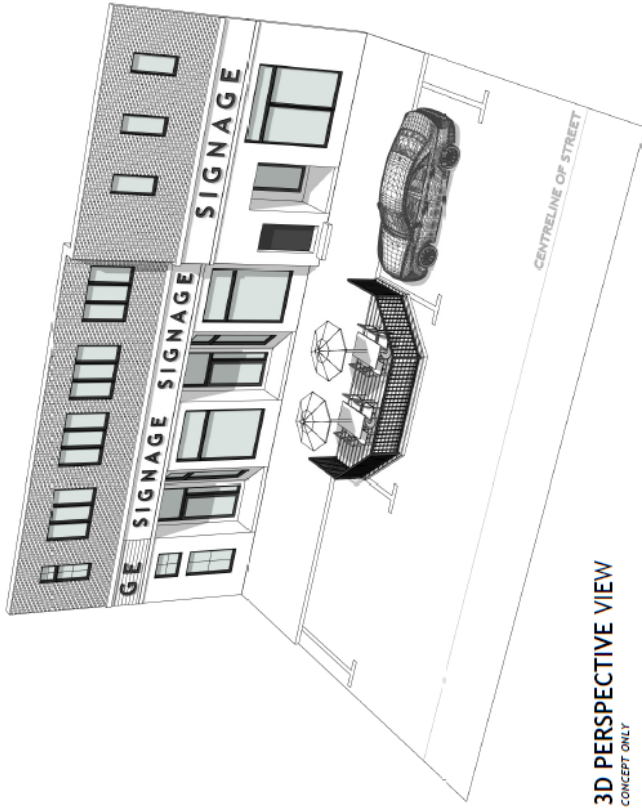
PLAN VIEW
CONCEPT ONLY



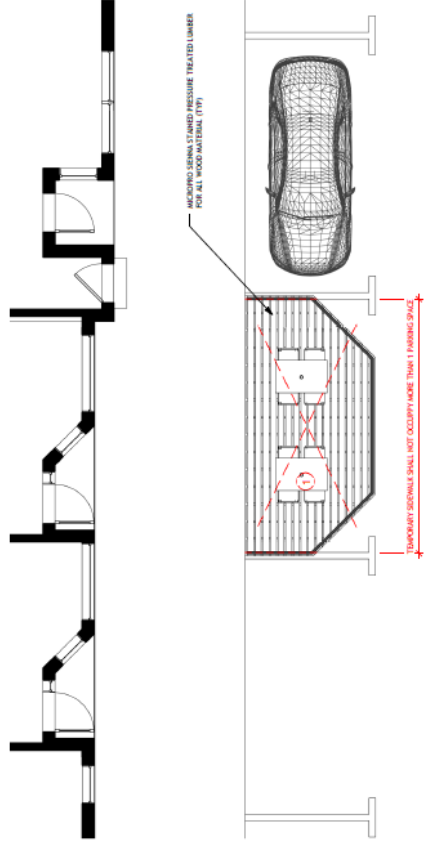
PUBLIC WORKS & PARKS SEASONAL PATIO REQUIREMENTS

FOR PERMIT READY DRAWINGS: CONTACT STAMP & HAMMER 905-235-3933
STAMP & HAMMER
PLAN DESIGN CONSTRUCT

A



3D PERSPECTIVE VIEW
CONCEPT ONLY



PLAN VIEW
CONCEPT ONLY



PUBLIC WORKS & PARKS SEASONAL PATIO REQUIREMENTS B

FOR PERMIT READY DRAWINGS CONTACT STAMP & HAMMER 905-238-3933
STAMP & HAMMER
PLAN DESIGN CONSTRUCT